

CURRENT AFFAIRS

WITH MINDMAPS

HINDI



Ans. =

A.B = 7:15

Honour Killing

Water Hyacinth-
Invasive Species

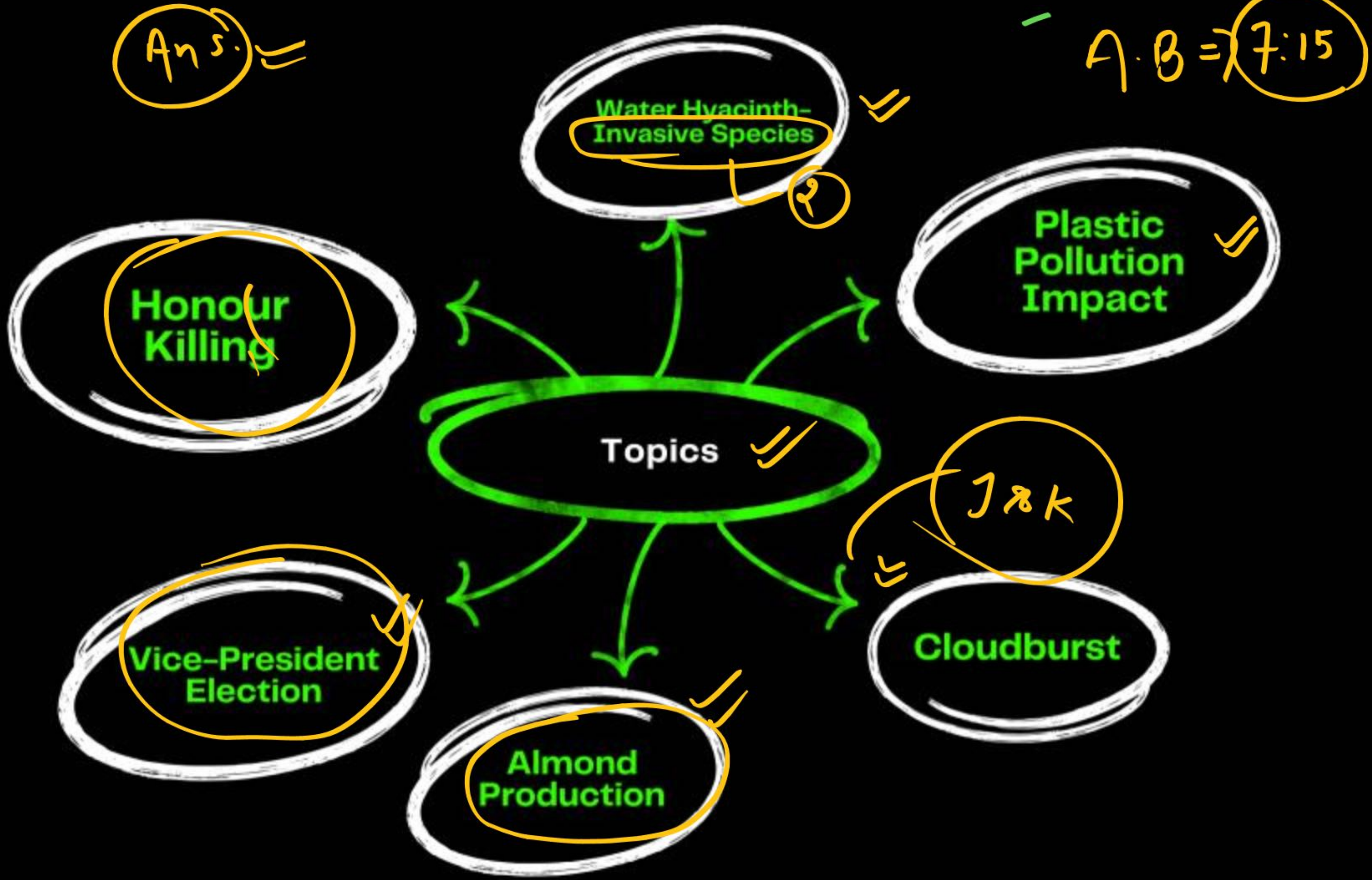
Plastic
Pollution
Impact

Topics

Vice-President
Election

Almond
Production

18K
Cloudburst



Vice-President

C.P. Radhakrishnan is NDA's V-P candidate

Nistula Hebbar

NEW DELHI

Maharashtra Governor C.P. Radhakrishnan was named the National Democratic Alliance's Vice-Presidential candidate on Sunday, after the BJP Parliamentary Board endorsed his name, in the presence of Prime Minister Narendra Modi.

Mr. Radhakrishnan, 68, is a former MP from Coimbatore and former Tamil Nadu BJP chief. The party's national president and Union Minister, J.P. Nadda, made the announcement



Union Home Minister Amit Shah congratulated C.P. Radhakrishnan on X on Sunday. X/@AMITSHAH

at a press conference after the Parliamentary Board meeting.

ALLIES TAKEN ON BOARD

» PAGE 12

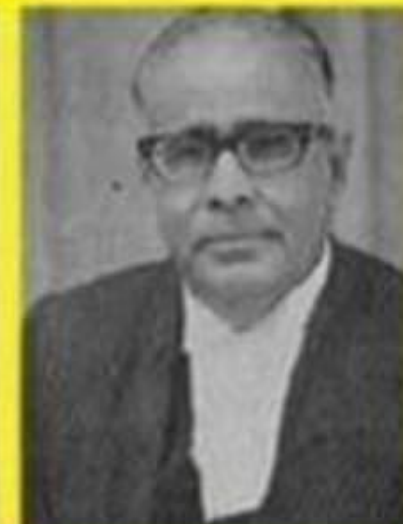
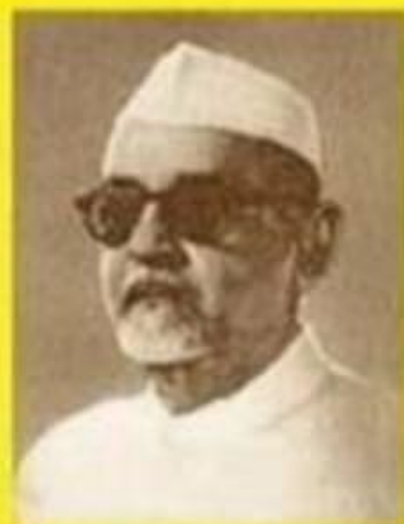
निम्नलिखित कथनों पर विचार कीजिए - UPSC - C.B

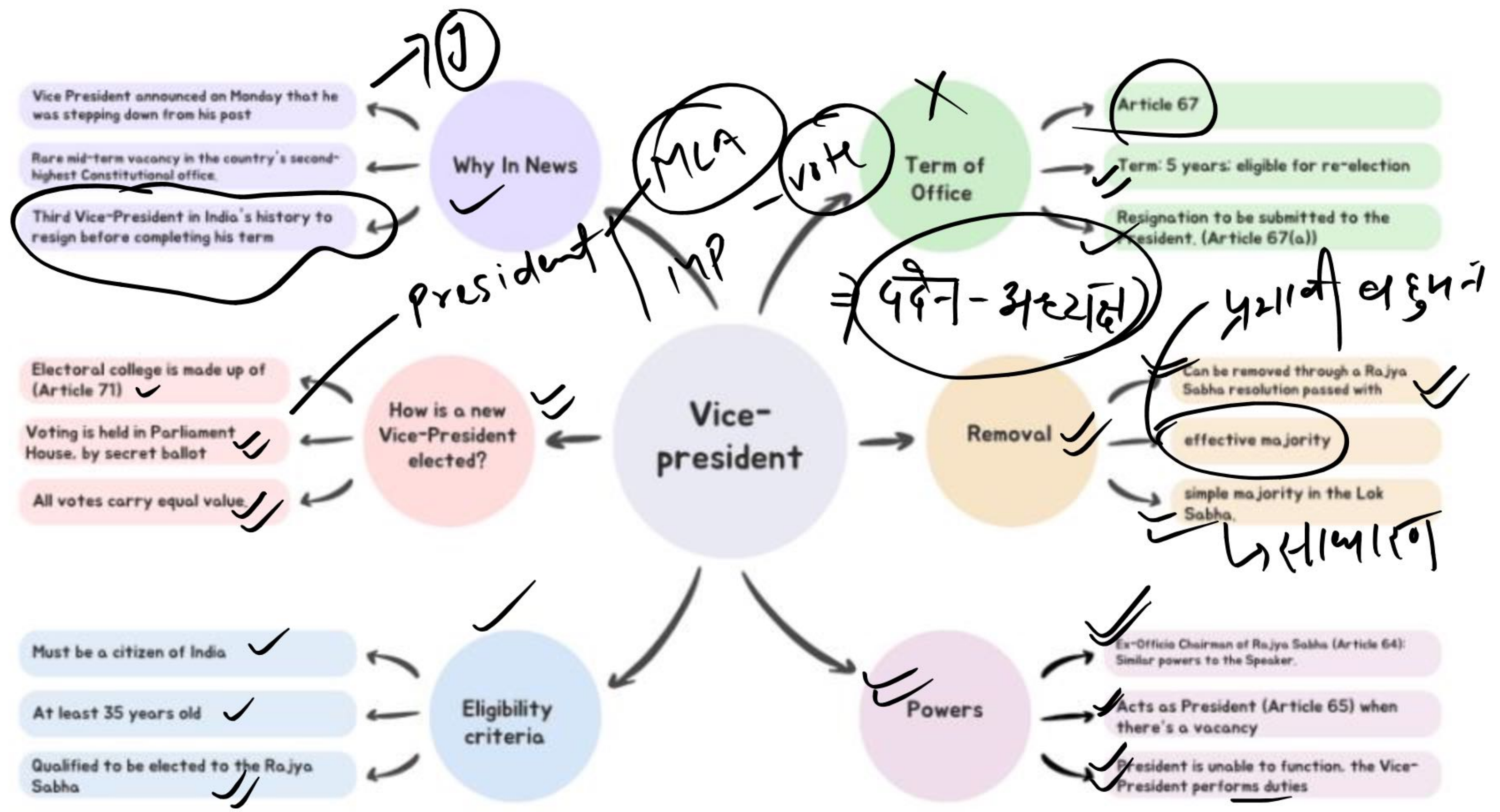
1. राज्यसभा के सभापति (Chairman) और उपसभापति (Deputy Chairman) उस सदन के सदस्य नहीं होते।
2. संसद के दोनों सदनों के मनोनीत सदस्य (Nominated Members) राष्ट्रपति के चुनाव में मतदान का अधिकार नहीं रखते, लेकिन उन्हें उपराष्ट्रपति के चुनाव में मतदान का अधिकार होता है।

उपरोक्त में से कौन-सा/से कथन सही है/हैं?

- A) केवल 1
- B) केवल 2
- C) 1 और 2 दोनों
- D) न तो 1 और न ही 2

List of Vice-Presidents of India





Vice-President

Art. 63 - भारत का एक उपरा. होगा

Art. 64 → पदेन सभापति (राज्यसभा)



उम्र ?

35

V.P. ?

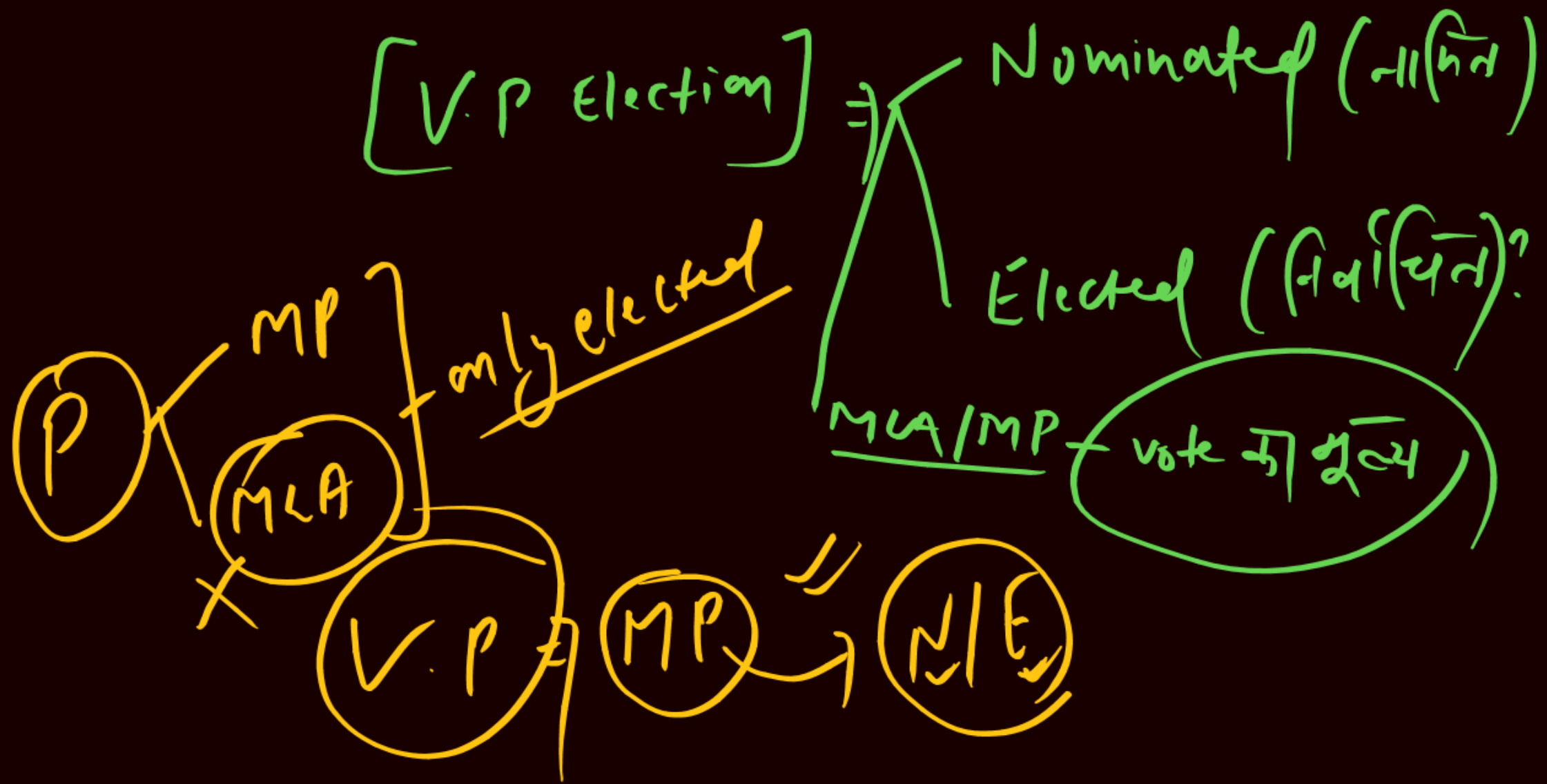
P

R.S.

V.P.

P

L.S.



निम्नलिखित कथनों पर विचार कीजिए -

1. जगदीप धनखड़ भारत के इतिहास में केवल तीसरे उपराष्ट्रपति हैं जिन्होंने कार्यकाल पूरा होने से पहले इस्तीफा दिया। ✓
2. उपराष्ट्रपति के चुनाव में राज्य विधानसभाओं के निर्वाचित सदस्य भी भाग लेते हैं। ✗
3. उपराष्ट्रपति पद के उम्मीदवार के लिए आवश्यक है कि वह लोकसभा का सदस्य चुने जाने के लिए पात्र हो। ✗

ऊपर दिए गए कथनों में से कितने कथन ग़लत हैं?

- a) केवल एक
- b) केवल दो ✓
- c) सभी तीनों
- d) इनमें से कोई नहीं



Only united action can stop the hyacinth's invasion

TII Premium

A national policy with region-specific implementation strategies is what can end the grave damage being caused by this invasive aquatic plant

Updated - August 15, 2025 01:13 am IST

venu rajamony



'Inland waters across India have been smothered, disrupting lives and livelihoods' |

Photo Credit: The Hindu

① - GS-3 (Env.) → TOPIC → EIA
PRE → A-SNP

Grassland invaders stifle Assam's island-like national park home to feral horses: study

Rahul Karmakar
GUWAHATI

A new study has identified at least two native plants that have joined invasive species to alter the riverine ecosystem of eastern Assam's Dibru-Saikhowa National Park (DSNP), the only habitat of feral horses in India.

These species have added to the changes in the grassland-dominated DSNP landscape, largely attributed to the recurring Brahmaputra river floods and increasing anthropogenic pressures from villages located within its boundaries, the study said.

The native "grassland invaders" are *Bombax ceiba* and *Lagerstroemia speciosa* - flowering trees known as Simaha and Ajar in Assamese. Their impact on the local vegetation has been as worrying as that of the invasive species, which include shrubs *Chromola-*



Unwelcome guests: Native and invasive plant species are changing the riverine ecosystem of the national park. SPICHA, ANANDASHEER

na odorata and *Ageratum conyzoides*, herb *Parthenium hysterophorum* and climber *Mikania micrantha*.

The study titled *Grasslands in Flux*, analysing the land use and land cover (LULC) changes in Dibru-Saikhowa from its designation as a national park in 1999 through 2024, was published in the latest issue of *Earth*, an international, peer-reviewed journal on earth science.

The researchers used remote sensing and geo-

graphic information systems to analyse the LULC changes in DSNP, an island-like formation between the Brahmaputra to the north and the Dibru river to the south.

According to their study, grasslands covered 28.78% of the 425 sq. km DSNP in 2000, followed by semi-evergreen forests (25.58%). By 2013, shrubland became the most prominent class (81.31 sq. km), and degraded forest expanded to 75.56 sq. km.

"During this period,

substantial areas of grassland (29.94 sq. km), degraded forest (10.87 sq. km), semi-evergreen forest (12.33 sq. km), and bare land (10.50 sq. km) were converted to shrubland. In 2024, degraded forest further increased, covering 80.52 sq. km (23.47%," the study said.

This change was the outcome of the conversion of 11.46 sq. km of shrubland and 27.48 sq. km of semi-evergreen forest into degraded forest, indicating a substantial and consistent decline in grassland, the study noted. Forest degradation can lead to loss of biodiversity, threaten the survival of local fauna, and reduce carbon storage, potentially intensifying climate change.

The study stated that the changes in the "natural structure and function" of the DSNP landscape pose a serious threat to the survival of grassland-obligate fau-

nal species, many of which are already globally threatened due to ongoing habitat loss.

"The concern is heightened by the fact that numerous species are endemic to the grasslands found in the floodplains of this region. Notable species which are rapidly decreasing include the Bengal florican (*Houbaropsis bengalensis*), hog deer (*Axis porcinus*), and swamp grass babbler (*Prinia cinerascens*)," the study said.

The DSNP is also home to some 200 feral horses, which are descendants of military horses abandoned during World War 2.

The study recommended a targeted grassland recovery project that would encompass the control of invasive species, improved surveillance, increased staffing, and the relocation of forest villages and support community-based conservation efforts.



1. Invasive species? → अक्रिय यन्त्र

2. Alien species? → ?



13. 'संक्रामक (इन्वेसिव) जीव-जाति (स्पीशीज़) विशेषज्ञ समूह' (जो वैश्विक संक्रामक जीव-जाति डेटाबेस विकसित करता है) निम्नलिखित में से किस एक संगठन से संबंधित है?

- (a) अंतर्राष्ट्रीय प्रकृति संरक्षण संघ (इंटरनेशनल यूनियन फॉर कंज़र्वेशन ऑफ नेचर)
- (b) संयुक्त राष्ट्र पर्यावरण कार्यक्रम (यूनाइटेड नेशंस एन्वाइरनमेंट प्रोग्राम)
- (c) संयुक्त राष्ट्र का पर्यावरण एवं विकास पर विश्व आयोग (यूनाइटेड नेशंस वर्ल्ड कमीशन फॉर एन्वाइरनमेंट ऐंड डेवेलपमेंट)
- (d) प्रकृति के लिए विश्वव्यापी निधि (वर्ल्डवाइड फंड फॉर नेचर)



1 समाचार में क्यों?

- ✓ जलकुंभी (Water Hyacinth) की आक्रामक प्रवृत्ति
- ✓ पारिस्थितिकी (Ecology) और अर्थव्यवस्था (Economy) दोनों पर व्यापक असर
- ✓ निपटने हेतु संयुक्त कार्रवाई की आवश्यकता पर बल

Water Hyacinth

मूल स्थान = दक्षिण अमेरिका
 सिचार्स - नहर
 कृषि क्षेत्र

3 प्रभाव

- ✓ कृषि पर
- ✓ मत्स्य पालन पर
- ✓ जैव विविधता और इको-टूरिज्म पर
- ✓ जैव विविधता और इको-टूरिज्म पर

तालाब
 ↓
 आर्षी
 पानी
 मछली

वेननास स्पीस
 (वेननास)

MIND MAP for Water Hyacinth



2 जलकुंभी (Water Hyacinth) क्या है?

- ✓ वैज्ञानिक नाम: **Eichhornia crassipes**
- ✓ आक्रामक (Invasive) जलीय पौधा है, जिसे मूलतः सजावटी पौधे के रूप में भारत में लाया गया।
- ✓ फ्री-फ्लोटिंग (मुक्त रूप से तैरने वाला), बहुवर्षीय (Perennial) पौधा है।
- ✓ मूल स्थान: दक्षिण अमेरिका के उपोष्णकटिबंधीय और उपोष्णकटिबंधीय क्षेत्र

4 Invasive Species in India

- ✓ Lantana
- ✓ American Bullfrog
- ✓ Parthenium=Congress Grass
- ✓ Siam Weed
- ✓ Mexican Devil
- ✓ Mesquite (Prosopis juliflora)

Invasive Species in India



भारत के बाहर
Invasive Species
उदा



Water Hyacinth

— जल कुआ

Lantana





**American
Bullfrog**



Parthenium=Congress Grass



Siam Weed



Mexican Devil ✓✓



Mesquite (Prosopis juliflora) ✓✓



Alleghator Weed

NATIONAL PARKS (ASSAM)



(ASSAM)

Dibru-Saikhowa N.P

1977 → B.R

1999 → N.P

→ Assam

Location

Dibrugarh (District)

जिला

Tinsukhia

⇒ यह भारत का सबसे बड़ा फलफली बन

Imp

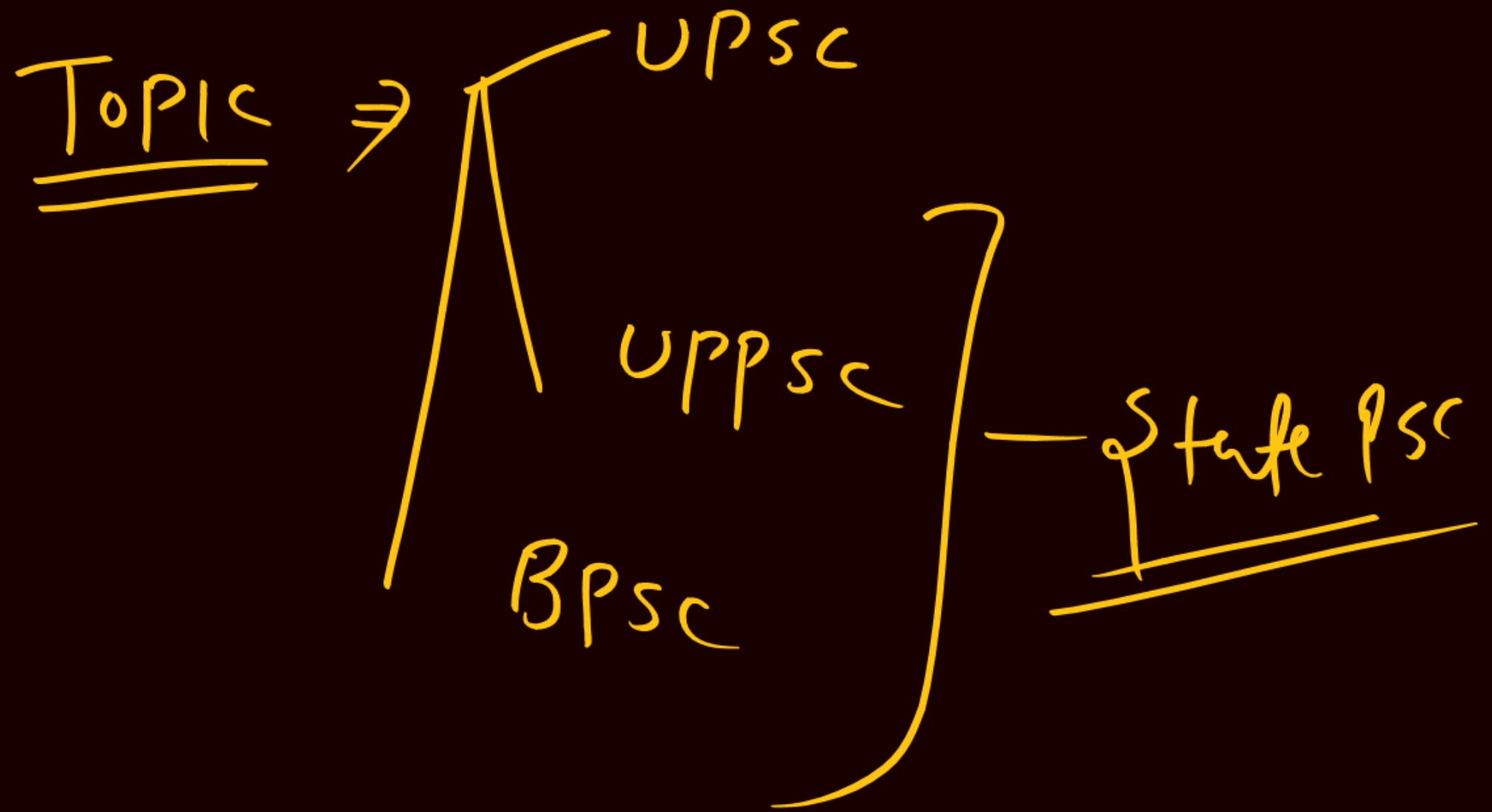
सफेद पंखों वाली कुड़ कुड़
काती फाती वाली लीला

North

South

- ब्रह्मपुत्र
- लोहित

↓ दिब्रु नदी



निम्नलिखित में से कौन सी एक आक्रामक विदेशी प्रजाति नहीं है?

- a) पार्थेनियम ✓
- b) अमेरिकन बुल फ्रॉग ✓
- c) प्रोसोपिस जलीफ्लोरा ✓
- d) इनमें से कोई नहीं

d

बादल खला
↓
। [AM]
२ १५-१३ १७

40 killed, over 100 missing as cloudburst strikes J&K

✓ J&K

Peerzada Ashiq
SRINAGAR

At least 40 people were feared dead and more than 100 missing after a flash flood triggered by a cloudburst hit Chositi, a remote village in Kishtwar in the Chenab Valley of the Jammu division, on Thursday.

Two CISF jawans were among the casualties.

Water bodies in Chositi, the last motorable pocket of the region, swelled following the cloudburst that was reported between noon and 1 p.m. Within half an hour, surging waters and rolling boulders smashed houses. At least 10 houses, temples and multiple government offices were damaged.

Officials refused to disclose the final toll as many are feared buried under the debris.

"Rescue operations have started in the area," the Deputy Commissioner of Kishtwar, Pankaj Kumar Sharma, said.



Washed away: An area damaged in the flash flood in Kishtwar district of Jammu and Kashmir on Thursday. PTI

An official said more than 30 bodies were recovered and hospitals reported at least 40 dead. More than 120 people caught in the debris were rescued and shifted to hospitals.

Chositi falls on the route of Machail Yatra and is 8.5 km away from the shrine. Shops and a community kitchen of the devotees were also damaged. The yatra has been suspended until further notice.

Dozens of personnel of the National Disaster Response Force (NDRF), the State Disaster Response Force (SDRF), police, and the Army were joined by local volunteers to rescue trapped civilians in the hilly area.

Additional personnel teams of the NDRF were dispatched to the area.

CONTINUED ON
» PAGE 14

बादल फटने से किश्तवाड़ में जल प्रलय



2024

6. 'बादल फटने' की परिघटना क्या है? व्याख्या कीजिए।

(उत्तर 150 शब्दों में दीजिए)

What is the phenomenon of 'cloudbursts'? Explain.

(Answer in 150 words) 10

बादल फटना (Cloudburst) क्या है?

⇒ 1m ⇒ (10x10)km
↓
10cm
100mm
↓
1घंटे



बादल फटना?

बादल फटना 10 किमी x 10 किमी क्षेत्र में एक घंटे में 10 सेमी या उससे अधिक वर्षा, या उसी क्षेत्र में आधे घंटे में 5 सेमी वर्षा है।

कारण

- ओरोग्राफिक लिफ्ट
- वायुमंडलीय अस्थिरता

पूर्वानुमानित किया जा सकता है?

Lorem ipsum dolor sit amet, consectetur adipiscing elit, sed do eiusmod tempor incididunt ut labore et dolore magna aliqua. Ut enim ad minim veniam.

Mind Map

cloud burst

उच्च जोखिम वाले क्षेत्र (IMD):

- उत्तराखंड, हिमाचल प्रदेश, पूर्वोत्तर राज्य।
- पश्चिमी घाट (गोवा से गुजरात तक)।

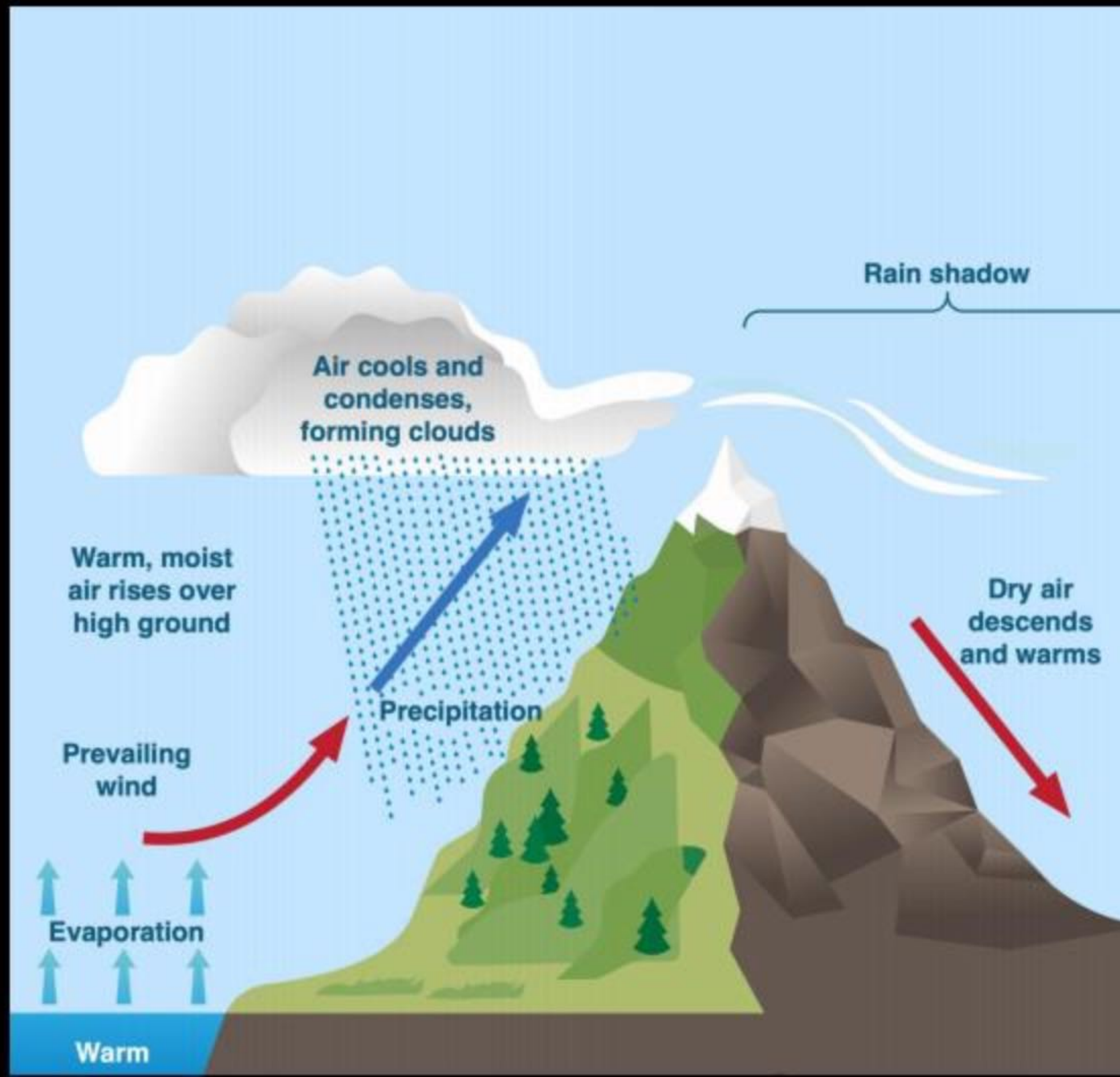
घटनाएँ क्यों बढ़ रही हैं?

- वैश्विक ऊष्मीकरण और बढ़ता तापमान
- जलवायु परिवर्तन और बदलता मानसून पैटर्न
- प्रदूषण और क्लाउड कंटेन्सेशन न्यूक्लियस (CCN)
- मानव कारक

प्रभाव

- अचानक बाढ़
- भूस्खलन
- बुनियादी ढाँचे का विनाश
- जीव-जनहानि और आजीविका हानि
- अर्थव्यवस्था और समाज पर गहरा संकट

Flash Flood



भारी
वायु

+ Air Poll

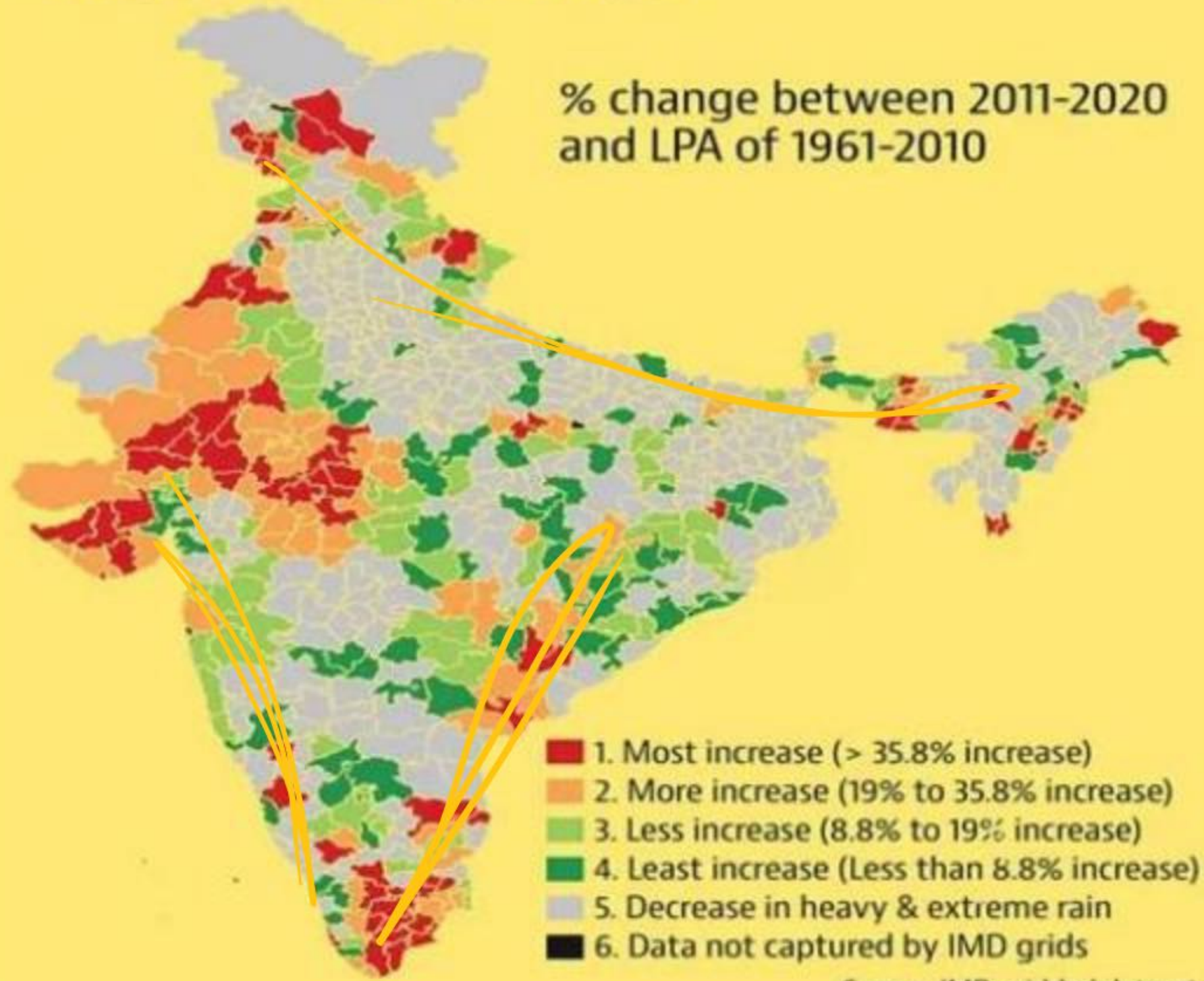


→ पर्वतीय
क्षेत्र → TRF
EF



Change in heavy and extreme monsoon rainfall

% change between 2011-2020 and LPA of 1961-2010



Source: IMD gridded dataset

2013
UK

केस स्टडी

[14 Aug 2025]

को जम्मू कश्मीर के विशतवाड जिले
के चिरौली गाँव में बादल फले
की धाना देजी गई जिसके कारण 40 लोगों
की मृत्यु, 100 लोग घायल और भारी मात्रा में
संवर्धन को बूझाने हुआ।

TOPICS

Polity

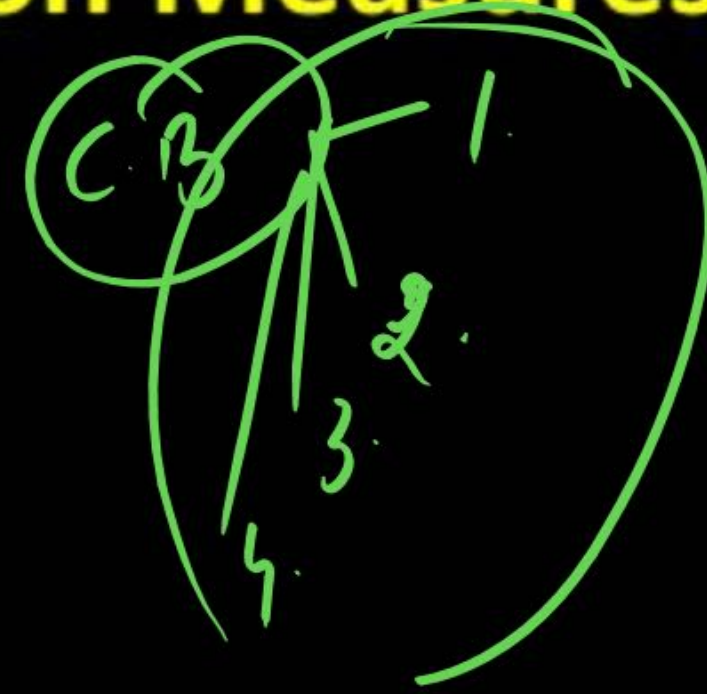
100

15



- अगस्त 1998 में उखीमठ (रुद्रप्रयाग) और मालपा (पिथौरागढ़)
- अगस्त 2001 में फाटा (रुद्रप्रयाग)
- अगस्त 2002 में बुराकेदार (टिहरी)
- अगस्त, 2012 में असी गंगा (उत्तरकाशी)
- सितंबर, 2012 में उखीमठ (रुद्रप्रयाग)
- जून 2013 में केदारनाथ (रुद्रप्रयाग)

उपशमन उपाय (Mitigation Measures)



Q8. भारतीय उपमहाद्वीप के संदर्भ में बादल फटने की क्रियाविधि और घटना को समझाइए । हाल के दो उदाहरणों की चर्चा कीजिए । (150 शब्दों में उत्तर दीजिए)

Explain the mechanism and occurrence of cloudburst in the context of the Indian subcontinent. Discuss two recent examples. (Answer in 150 words)

10

How does plastic pollution affect health?

Why have negotiators in Geneva rejected a draft treaty? What is the threat from lab-made polymers? What are the chemicals potentially used or present in plastic materials and products? Does exposure to these chemicals have an adverse impact on health?

Jacob Koshy

The story so far

Around 180 countries have failed to find consensus on an internationally binding legal agreement that sought to restrict plastic pollution. Talks in Geneva remained deadlocked on the issue late this week. While there is already a United Nations Environment Programme (UNEP)-backed resolution on the need for such a move, only a binding agreement will actually force countries to take concrete action. However, countries are divided on several questions: should they address plastic waste alone or include plastic production? should developing countries be funded by developed countries for the purpose? The key point of contention is the role of plastics in health.

What are the challenges from plastic?

No material symbolises the global, industrialised, consumption-based economy like plastic. The chemical constituents of plastics are polymers, and they can be natural – like cellulose, lignin, and are the basis of nearly everything in nature – or made in labs. Polymers derived from fossil fuel and then shaped into objects are in general called 'plastic.' As a derivative of crude oil, it has the ability to be moulded into a nearly infinite variety of objects, from critical things, including aircraft

A report last year in the journal *Nature* concluded that more than 4,000 chemicals of concern can be present in each major plastic type

and medical equipment, to cosmetic items such as tinsel, baubles and packaging. Add to that its low cost of production relative to materials such as glass and aluminium. The ubiquity of plastics and the fact that it is cheap has led to it being the prime source of litter and a symbol of the collapse of waste management systems.

However, plastic's flexibility also implies its persistence. Plastics are mixtures of various types that include monomers, polymers, and chemical additives. There are more than 16,000 chemicals potentially used or present in plastic materials and products. There is little or no information about the potential impact on human health or the environment by over 10,000 of these chemicals. A report last year in the journal *Nature* concluded that more than 4,000 chemicals of concern can be present in each major plastic type, such as PVC, polyurethanes, PET, polyethylene and others. Given that most of these are synthetic and non-biodegradable, public opinion has generally focused on recycling or waste management. Over the years, however, there has been a body of scientific investigation into how these chemicals – that are indestructible – may make their way into living organisms in rivers, oceans, land and ultimately inside people.

What is evidence that plastic harms health?

Ethylene, propylene, styrene and their derivatives are commonly used to make plastic. Ethylene derivatives such as polypropylene (PP), low-density polyethylene (LDPE), linear low-density polyethylene (LLDPE), high-density polyethylene (HDPE) and polyethylene terephthalate (PET) comprise the largest portion of downstream petrochemicals used to make plastic packaging. However, manufacturing them requires a range of other chemicals, several of which are monomers (the building blocks of polymers). These include bisphenols, phthalates, polychlorinated biphenyls (PCB), polybrominated diphenyl ethers (PBDEs), and per- and poly-fluoroalkyl substances (PFAS). They are used to produce food containers, drink bottles, teething toys, polyester, intravenous bags, cosmetics, paints, electronic components, adhesives and sealants.

For years, there have been a bulk of studies where medical researchers have investigated if exposure to these chemicals, via the products

used, is having a discernible impact on health. Earlier this month, Boston College in the U.S. and Australia's Minderoo Foundation launched a dashboard that compiled such evidence. There are around 1,100 primary studies involving about 1.1 million individuals that have linked changes in thyroid function, hypertension, kidney and testicular cancer, and gestational diabetes to exposure to these chemicals. The vast proportion of these individuals studied are in the developed world. Nearly, all of these studies are "associative", in the sense that the measured disease outcome could be a result of exposure to the chemicals as well as a range of other factors, and it is not always possible to tease apart individual effects.

The true "gold standard" of exposure is a "longitudinal study", where a fixed group of people are tracked over a long time to discern the effects of chemical exposure, but this is time consuming. There are studies underway, said Dr. Sarah Paul, neuroscientist and head of Plastics and Human Health, Minderoo, to evaluate if a group of people who were consciously less exposed to certain plastics would have improved health outcomes.

What about microplastics?

Microplastics are plastics smaller than five millimetres and can refer to the constituent elements of a variety of additives or plastic products. Given that technology available to detect them is relatively recent, they have over the years been found in blood, breast milk, placenta and bone marrow. While their exact impact on human health is unclear, they too are implicated in a wide range of disorders.

What is India doing about plastic?

There is a ban on the production and use of single-use plastics in nearly 20 States. These are the category of plastic goods that are the least re-usable and difficult to recycle. Given that they constitute a waste management problem, India has a range of administrative process meant to push companies towards ensuring that a proportion of plastic that is used are collected back. However, this has had limited effect. India doesn't yet recognise the impact of plastics and chemicals on health.

In international negotiations on the global plastics treaty, India and other countries have expressed reservations on including discussions on health in the plastic treaty and said that these are matters to be taken up at the World Health Organization. Thus, plastics is primarily a waste management problem, as far as India is concerned.



Enduring threat: An NGO volunteer collects plastic waste from the Panchakkari canal, in Thiruvananthapuram, on August 4. PH

UNEP

Throw

सतता, पुनर्निर्माण (Circularity)

- प्लास्टिक प्रदूषण पर कानूनी रूप से बाध्यकारी संधि
- Plastic Pollution Resolution (2022)
- बाध्यकारी दायित्व



2024



- औद्योगिक अर्थव्यवस्था का प्रतीक
- अविनाशी (Persistence)
- रासायनिक जटिलता (Chemical Complexity):

Plastic Impacts



- क्या ध्यान केवल प्लास्टिक कचरे पर हो या प्लास्टिक उत्पादन पर भी?
- क्या विकसित देश विकासशील देशों को वित्तीय सहयोग दें?
- क्या प्लास्टिक रसायनों (Plastic Chemicals) के स्वास्थ्य प्रभाव भी संधि का हिस्सा हों?



- हानिकारक एडिटिव्स/मोनोमर्स: बिस्फिनॉल्स, फ्रेथलेट्स, PCB, PBDE, PFAS।
- प्रयोग: खाद्य कंटेनर, खिलौने, कॉस्मेटिक्स, पेंड्स, मेडिकल उपकरण।
- माइक्रोप्लास्टिक का पता चला है:
 - रक्त, स्तन-दूध, गर्भनाल (Placenta), अस्थि-मज्जा।

प्रकृति में अपघटन नहीं

समस्याएँ



- Toxic Legacy of Polymers (पॉलिमर की विषैली विरासत)
- Global Polycrisis (वैश्विक बहु-संकट)
- Chemical Time Bomb (रासायनिक समय-बम)

10,000 chemicals

90%

India-1st
 9.3 Million tons
 प्रति व्यक्ति = 11kg/वर्ष



प्रश्न (Mains 2023):

तेल प्रदूषण (Oil Pollution) क्या है? इसके समुद्री पारिस्थितिकी तंत्र पर क्या प्रभाव हैं? भारत जैसे देश के लिए तेल प्रदूषण किस प्रकार विशेष रूप से हानिकारक है?

Nutty delight

Kashmir records a bumper almond harvest this season, boosting farmer incomes; however, weather shifts, imports, and shrinking farmland remain key concerns

The almond harvest in Kashmir marks an important seasonal and cultural event, and this year's bumper crop has brought smiles to farmers' faces.

Almond trees bloom in early spring, colouring the landscape in delicate shades of pink and white, which later turn green before the harvest in summer.

Kashmir's moderate climate, fertile soil, and abundant water sources provide ideal conditions for almond cultivation.

Kashmiri almonds, usually small in size but known for their sweet flavour and high oil content, are primarily grown in Anantnag and Pulwama in southern Kashmir, Budgam in central Kashmir, and Baramulla in the north. The varieties cultivated include both soft-shell and hard-shell almonds.

Harvesting almonds is a labour-intensive process. Farmers wait until the green outer hulls begin to split naturally, indicating ripeness. Then comes the "shakedown". The almonds are manually shaken from the trees using sticks and

collected on cloth sheets spread beneath them. Once harvested, the nuts are sun-dried for several days before the shells are removed.

Women and children also participate in this traditional activity, turning it into a family business that is often celebrated at the community level.

Almonds are used extensively in traditional cuisine, especially in sweets and beverages such as *kehwa*. Locally grown almonds are preferred over imported varieties due to their superior taste and freshness.

Despite their importance, almond farmers in Kashmir face challenges such as erratic weather patterns, limited access to modern farming techniques, competition from lower-cost imports, shrinking farmlands, and a lack of policy support from authorities. To address these issues, the government is now planning to introduce high-density varieties of almonds across Kashmir.

The almond harvest remains a celebratory event in Kashmir's rural life, blending natural beauty with traditional farming practices.



Fit for harvest: A farmer scrutinises almonds on a tree for harvest in Pulwama. Once the almonds are ripe, they are shaken off the tree using sticks and collected on cloth sheets spread under.



बासम ⇒

Rosean

⇒ मध्यपूर्व के क्षेत्र

⇒ गुलाब परिवार में सदस्य

⇒ उत्पादन - USA

⇒ India - J&K

⇒ आफ्रिका के प्रती संवेदनशील

⇒ पुष्पमय मही (15-30)

प्रश्न: "यह फसल उपोष्णकटिबंधीय प्रकृति की है। कड़ा पाला इसके लिए हानिकारक है। इसके विकास के लिए कम से कम 210 पाले-रहित दिन और 50 से 100 सेंटीमीटर वर्षा की आवश्यकता होती है। नमी बनाए रखने में सक्षम हल्की और अच्छी जल निकासी वाली मिट्टी इस फसल की खेती के लिए आदर्श है।"

निम्नलिखित में से वह फसल कौन सी है? (2020) ✓

- A) कपास
- B) जूट
- C) गन्ना
- D) चाय

Almond Exporting Countries



Rank	Country	Almond Exports 2017 (US\$)	% of total exported Almonds
1	United States	4.3 billion	69.3%
2	Spain	596.3 million	9.5%
3	Australia	351.1 million	5.6%
4	Hong Kong	215.5 million	3.4%
5	Germany	114.5 million	1.8%
6	Netherlands	107.3 million	1.7%
7	Italy	101 million	1.6%
8	Turkey	85.3 million	1.4%
9	Belgium	51.4 million	0.8%
10	Chile	42.4 million	0.7%



TOP ALMOND PRODUCING STATES IN INDIA

- JAMMU AND KASHMIR
- HIMACHAL PRADESH
- MAHARASHTRA
- KARNATAKA
- ANDHRA PRADESH
- UTTAR PRADESH
- KERALA
- TAMIL NADU
- WEST BENGAL
- GUJARAT
- RAJASTHAN



How 'honour' killings in India are reinforced and legitimised

States like Tamil Nadu, Telangana, Maharashtra, and Kerala – where Dalit communities have seen relatively greater empowerment – record higher rates of inter-caste marriages. Ironically, these are also the States with increased incidents of honour killings

Sivabalan Elangovan

Caste in India is not an individual problem – it is a deeply rooted social phenomenon. Caste survives and thrives not just because individuals insist on it, but because families, communities, and entire social structures continue to enforce and legitimise it, knowingly or otherwise.

At the heart of this caste endurance lie social customs passed down and protected within households. Children grow up internalising boundaries – who to talk to, who to marry, who to avoid – long before they can even articulate why. As a result, the caste system remains one of the most resilient social frameworks in India.

'Honour' killings

One of the biggest threats to the rigidity of caste has been social justice interventions. When marginalised communities, particularly Dalits, gain access to quality education and secure meaningful employment, it opens the gates for their integration into mainstream society. With that, a foundational shift begins. No longer confined to the margins, the oppressed now begin to interact with caste-Hindu society on an equal footing – in workplaces, colleges, cities, and most importantly, in relationships. This has created a new frontier of social tension: romantic unions that cross caste lines, especially those involving Dalit men and dominant caste women. These unions represent not just love or rebellion but a direct challenge to centuries-old caste hierarchies. And for many conservative

families, that challenge is intolerable.

States like Tamil Nadu, Telangana, Maharashtra, and Kerala – where Dalit communities have seen relatively greater empowerment – also record higher rates of inter-caste marriages. According to the India Human Development Survey (IHDS-II), the national rate of inter-caste marriages stands at around 5%, but States with empowered Dalit populations show higher numbers. Ironically, these are also the States with increased incidents of honour killings.

This paradox reveals a disturbing truth: honour killings occur not where casteism is strongest, but where it is most threatened. In States where the oppressed still maintain their "status quo," violence is less – not because casteism is absent, but because it remains unchallenged. Thus, caste-based violence is not a sign of persistent hierarchy alone, but of hierarchy under siege.

Tamil Nadu's caste paradox

When caste killings happen, democratic voices among the public are strong in Tamil Nadu as the State boasts a strong and vibrant civil society. At the same time, caste is glorified on social media. Due to the anonymity such platforms offer, some accounts go so far as to defend caste killings.

How do we understand this paradox? Perhaps in Tamil Nadu, while people possess a collective consciousness against casteism, shaped by decades of social justice politics, individual attitudes may not always align in the same way. The State's anti-caste culture is collectively progressive but individually conflicted. In public, caste violence is rejected but in

private conversations, WhatsApp groups, and through anonymous posts, caste continues to dictate social preferences, marriage alliances, and "honourable behaviour."

This paradox does not mean that Tamil Nadu's anti-caste movement is a failure. It means that one is living in a liminal space – between tradition and transformation. What we see on social media is not just caste pride, it's also the fear of losing inherited power and the anxiety of cultural change.

On family and caste

There's a popular belief that the caste system survives mainly because of political parties or caste-based organisations. While these certainly reinforce caste divisions in the public sphere, they are not the roots of the system. Caste survives because it is protected and transmitted within the family. Through everyday customs, rituals, marriage arrangements, social expectations, and inherited prejudices, caste becomes part of a child's consciousness long before they can question it. This is why caste has remained transgenerational, even in the face of rising education, urbanisation and exposure to new ideas.

However, the psychological and cultural importance of the 'family' itself is changing, especially among adolescents. Around the world, particularly in countries like South Korea and Japan, we are seeing dramatic shifts: marriage rates are falling, fertility rates are at historic lows, and the traditional family unit is losing its central place in people's lives. Instead, new models of relationship –

open partnerships, cohabitation, single living, and self-parenting – are emerging.

India's urban youth are slowly reflecting this trend too. Many adolescents today are increasingly prioritising individual growth, emotional well-being, and autonomy over traditional family obligations. As the value of the family unit weakens, so too does the primary mechanism through which caste is enforced and reproduced.

In other words, if the family becomes less central in shaping relationships and social norms, caste may lose its strongest and oldest vehicle of survival. This doesn't mean that caste will disappear overnight. But it suggests that the cultural infrastructure that sustains it is slowly being dismantled – not by revolution, but by changing lifestyles, shifting emotional priorities, and evolution of the self.

Caste in India is at crossroads. On one hand, we see violent reactions and online glorification. On the other, we witness strong democratic voices against honour killings and a new generation slowly withdrawing from social values. Tamil Nadu symbolises this contradiction in its most vivid form – a State where both the loudest resistance to casteism and the quietest internal caste pride coexist. But it also offers hope: if this contradiction is acknowledged, addressed, and challenged, especially through engagement and digital counter-narratives, we may finally move toward a society where caste loses its grip not only on our systems, but on our hearts and minds.

Sivabalan Elangovan is Professor and Head, Dept of Psychiatry, Dr MGR Educational and Research Institute.

Thank

you

